

- GENERAL NOTES:**
- ALL DOOR OPENINGS SHALL BE FRAMED 6" FROM ADJACENT STUD WALLS ON THE HINGE SIDE OF DOOR UNLESS NOTED OTHERWISE.
 - SEE A-601 FOR PARTITION TYPES.
 - EXTERIOR DIMENSIONS ARE TO OUTSIDE FACE OF BRICK WALL GRID LINES, AND ROUGH OPENINGS FOR DOORS AND WINDOWS.
 - INTERIOR DIMENSIONS ARE TO FINISH FACE OF PARTITIONS, GRIDLINES, AND OBJECT CENTERLINES.
 - DOOR DIMENSIONS ARE TO ROUGH OPENINGS AT MASONRY AND CONCRETE WALL AND TO DOOR OPENINGS AT STUD WALLS.
 - FOR ADDITIONAL WINDOW TYPES SEE BUILDING ELEVATIONS AND WINDOW TYPES SHEETS A603 AND A604
 - EXPANSION JOINT LOCATION AND SIZE MUST BE VERIFIED BY SOILS REPORT, SEISMIC DESIGN AND STRUCTURAL EVALUATION. EXPANSION JOINT MAY BE APPLIED ABOVE FINISHED FLOOR TO TOP OF STRUCTURE WITH NO JOINT AT THE SLAB OR FOUNDATION. THIS MUST BE EVALUATED AND APPROVED BY THE STRUCTURAL ENGINEER OF RECORD.

- KEYED NOTES**
- 01 BASIS OF DESIGN: 3200-SERIES SURFACE-MOUNT KNOX BOX OR APPROVED EQUAL COLOR: PER INSTALLATION "DESIGN STANDARDS"
 - 02 6'-0" WIDE x 6'-0" LONG RECESSED ENTRY MAT CENTERED IN VESTIBULE - SEE DETAILS
 - 03 ROOF ACCESS LADDER
 - 04 DRINKING FOUNTAINS
 - 05 RECYCLE BINS BELOW COUNTER
 - 06 VENDING MACHINES
 - 07 FULL HEIGHT FOLDING PARTITIONS
 - 08 4'-0" WIDE x 6'-0" LONG RECESSED ENTRY MAT CENTERED IN VESTIBULE - SEE DETAILS
 - 09 FOR CLARITY, MECHANICAL YARD SHOWN ON ENLARGED PLAN SHEET A406
 - 10 5/8" GYP BD OVER 3 5/8" METAL STUDS WITH IMPACT RESISTANT GWB TO 9'-0" A.F.F. OVER X BRACING - SEE STRUCTURAL DRAWINGS
 - 11 DASHED LINE INDICATES NBS NO BUMP STAINLESS STEEL EXPANSION JOINT COVER BY "BALCO" OR EQUAL
 - 12 DASHED LINE INDICATES 75 WPVE-2 ELASTOMERIC CORNER EXPANSION JOINT COVER BY "BALCO" OR EQUAL

US ARMY CORPS OF ENGINEERS
TULSA DISTRICT

DESIGNED BY: M. GUMP P.E.
DRAWN BY: M. GUMP P.E.
REVIEWED BY: D. GURLEY P.E.
SUBMITTED BY: MARK BURKHOLDER P.E.
CHIEF DESIGNER/BRANCH CHIEF & CONSULTANT

DATE: _____
SOLUTION NO.: W1212N-14-X-XXXX
CONTACT NO.: W1212N-14-X-XXXX
FILE NAME: W1212N-14-X-XXXX
PROJECT DATE: 20 SEPTEMBER 2013
PROJECT SCALE: AS SHOWN

U.S. ARMY ENGINEER DISTRICT,
CORPS OF ENGINEERS
TULSA, OKLAHOMA

ENGINEERING & CONSTRUCTION DIVISION
DESIGN BRANCH

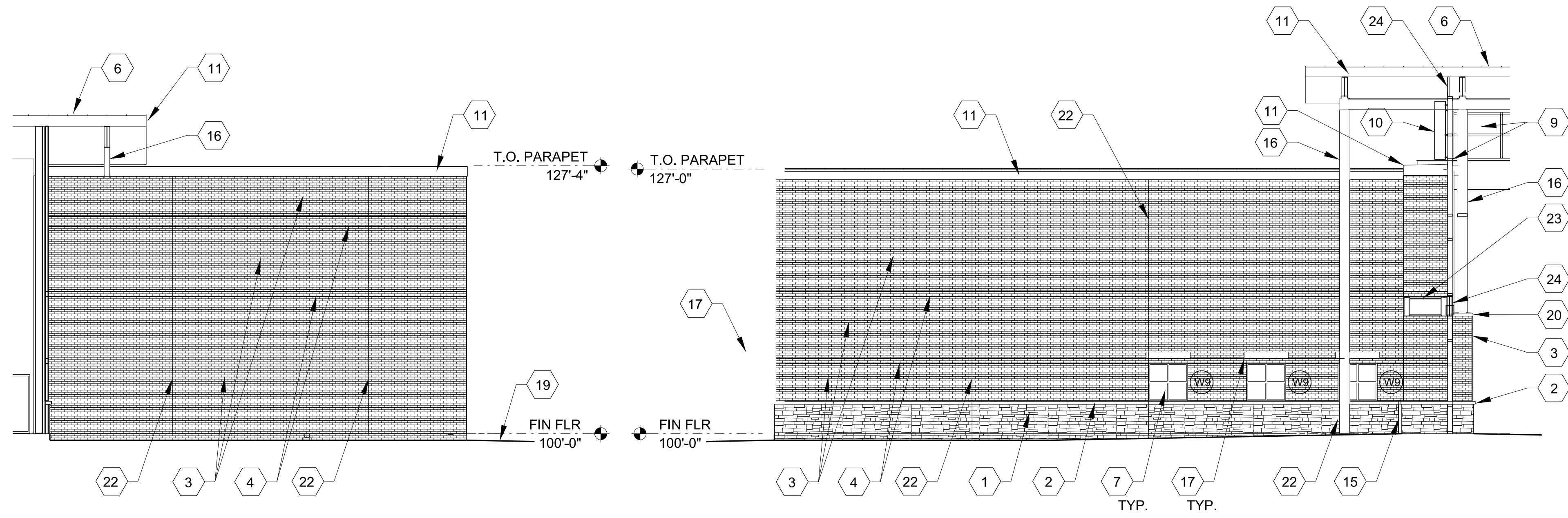
BASIC TRAINING (BT) BATTALION
HEADQUARTERS (BNHQ) REGION 3A
ADAPT-BUILD DESIGN ENERGY MODEL

FLOOR PLAN

SHEET REFERENCE NUMBER
A-101

1 ARCHITECTURAL FLOOR PLAN
SCALE: 1/8" = 1'-0"





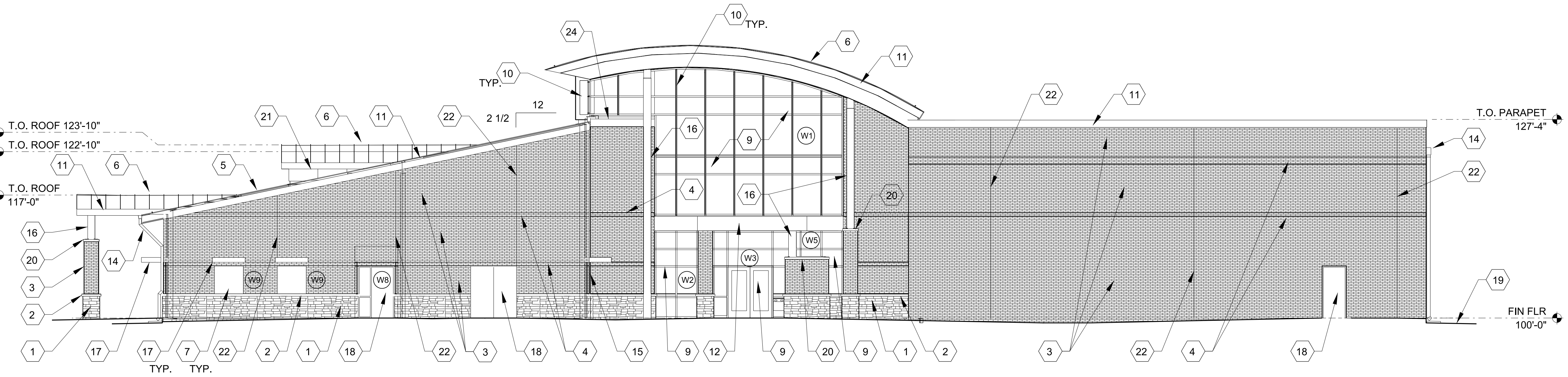
A WEST COURTYARD ELEVATION
A-201 SCALE: 1/8" = 1'-0"

B EAST COURTYARD ELEVATION
A-201 SCALE: 1/8" = 1'-0"

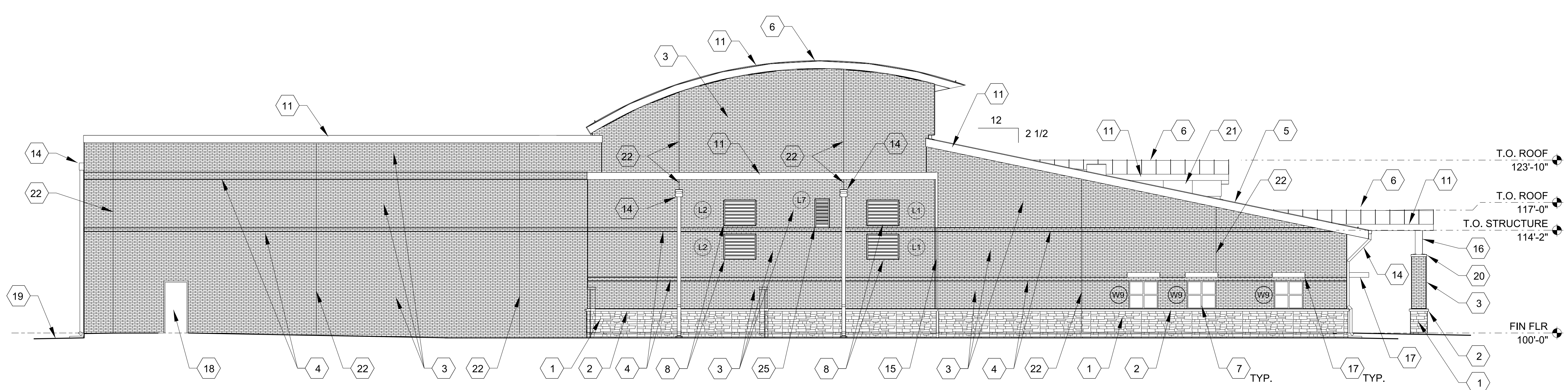
EXTERIOR COLOR SCHEDULE	
LIMESTONE	PER INSTALLATION STDS
CAST STONE BAND	PER INSTALLATION STDS
LIMESTONE MORTAR	PER INSTALLATION STDS
BRICK (FIELD COLOR)	PER INSTALLATION STDS
BRICK MORTAR	PER INSTALLATION STDS
SSMR	PER INSTALLATION STDS
FASCIA / SOFFITS	PER INSTALLATION STDS
GUTTERS/ DOWNSPOUTS	PER INSTALLATION STDS
FIXED WINDOW FRAMES	PER INSTALLATION STDS
CAULK	PER INSTALLATION STDS
WINDOW GLAZING	PER INSTALLATION STDS
ALUMINUM STOREFRONT DOOR	PER INSTALLATION STDS
HM. DOOR FRAME	PER INSTALLATION STDS
MECH. LOUVER	PER INSTALLATION STDS
CANOPY	PER INSTALLATION STDS
METAL PANELS	PER INSTALLATION STDS

- GENERAL NOTES:**
- LOUVERS SIZES ARE SHOWN ON SHEET A-602
 - FOR ALL METAL FINISHES CONCEALED FROM VIEW (LIKE THE BACK SIDES OF PARAPETS) AND EXPOSED TO WEATHER, PAINT COLOR TO MATCH ADJACENT WALL COLOR U.N.O.
 - MECHANICAL SCREEN WALL NOT SHOWN FOR CLARITY ON NORTH ELEVATION - SEE MECHANICAL SCREEN ELEVATIONS SHEET A202

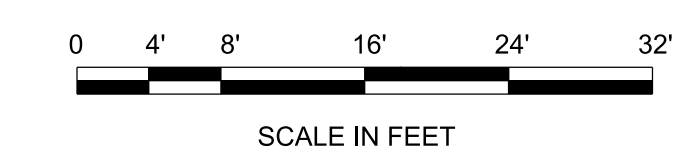
- KEYED NOTES:**
- INSTALLATION "DESIGN STANDARD" WAINSCOTT VENEER - 3 1/2" - 5 1/2" NOMINAL W/ ADJ. ANCHORS @16" O.C. - SEE INSTALLATION "DESIGN STANDARDS"
 - 4" SMOOTHFACE STONE OR PRECAST BAND
 - RUNNING BOND BRICK PATTERN - FIELD COLOR TO MATCH INSTALLATION "DESIGN STANDARDS"
 - RUNNING BOND BRICK PATTERN - ACCENT COLOR TO MATCH INSTALLATION "DESIGN STANDARDS"
 - STANDING SEAM METAL ROOF SYSTEM NO. 1 SEE ROOF PLAN
 - STANDING SEAM METAL ROOF SYSTEM NO. 2 SEE ROOF PLAN
 - KAWNEER 8400 TL ISOLOCK BLAST RESISTANT ALUMINUM FIXED WINDOW OR EQUAL WITH 1" LAMINATED INSULATED LIGHT TINT GLAZING TO MATCH INSTALLATION "DESIGN STANDARDS"
 - MECHANICAL LOUVERS - SEE DETAILS AND MECHANICAL DRAWINGS FOR SIZE AND COORDINATING LOCATION
 - KAWNEER 1600 SERIES BLAST RESISTANT ALUMINUM CURTAIN WALL SYSTEM OR EQUAL WITH 1" LAMINATED INSULATED LIGHT TINT GLAZING TO MATCH INSTALLATION "DESIGN STANDARDS"
 - 14" DEEP VERTICAL VERSOLEIL SUNSHADE SYSTEM BY KAWNEER OR EQUAL INTEGRAL WITH CURTAIN WALL SYSTEM
 - PREFINISHED BRAKE METAL FASCIA AND COPING BY ROOFING CONTRACTOR- SEE DETAILS
 - PREFINISHED 1" INSULATED METAL PANEL CLADDING AT CANOPY OVER STEEL STRUCTURE
 - NOT USED
 - PREFINISHED SCUPPER OR METAL GUTTER SYSTEM WITH DOWN LEADER W/ SPLASHBLOCK
 - CONTINUOUS BUILDING EXPANSION JOINT - SEE SPECS
 - STEEL STRUCTURE - SEE STRUCTURAL DRAWINGS
 - ALUMINUM SUSHADE - FINISH PER BASE STANDARDS
 - INSULATED HOLLOW METAL DOOR(S) AND FRAME
 - FINISHED GRADE
 - PRECAST CONCRETE OR STONE MASONRY CAP PER INSTALLATION "DESIGN STANDARDS"
 - 2" INSULATED METAL PANELS AT DORMER WALLS
 - MASONRY CONTROL JOINTS - SEE DETAILS
 - STANDING SEAM METAL ROOF SYSTEM NO. 3 SEE ROOF PLAN
 - PREFINISHED 2" METAL PANELS ON METAL FRAMING - SEE DETAILS



C SOUTH BUILDING ELEVATION
A-201 SCALE: 1/8" = 1'-0"



D NORTH BUILDING ELEVATION
A-201 SCALE: 1/8" = 1'-0"



US ARMY CORPS OF ENGINEERS
TULSA DISTRICT

DESIGNED BY: M. GUMP, P.E.
DRAWN BY: M. GUMP, P.E.
REVIEWED BY: D. BURLEY, P.E.
SUBMITTED BY: MARK BURKHOLDER, P.E.
CHIEF DESIGN BRANCH
ENGINEERING & CONSTRUCTION DIVISION

U.S. ARMY ENGINEER DISTRICT,
CORPS OF ENGINEERS
TULSA, OKLAHOMA

ENGINEERING & CONSTRUCTION DIVISION
DESIGN BRANCH

BASIC TRAINING (BT) BATTALION
HEADQUARTERS (BNHQ) REGION 3A
ADAPT-BUILD DESIGN ENERGY MODEL

NORTH/SOUTH ELEVATIONS

SHEET REFERENCE NUMBER
A-201

1 2 3 4 5

EXTERIOR COLOR SCHEDULE	
LIMESTONE	PER INSTALLATION STND
CAST STONE BAND	PER INSTALLATION STND
LIMESTONE MORTAR	PER INSTALLATION STDS
BRICK (FIELD COLOR)	PER INSTALLATION STND
BRICK MORTAR	PER INSTALLATION STND
SSMR	PER INSTALLATION STND
FASCIA / SOFFITS	PER INSTALLATION STDS
GUTTERS/ DOWNSPOUTS	PER INSTALLATION STDS
FIXED WINDOW FRAMES	PER INSTALLATION STDS
CAULK	PER INSTALLATION STDS
WINDOW GLAZING	PER INSTALLATION STND
ALUMINUM STOREFRONT DOOR	PER INSTALLATION STND
HM. DOOR FRAME	PER INSTALLATION STND
MECH. LOUVER	PER INSTALLATION STND
CANOPY	PER INSTALLATION STND
METAL PANELS	PER INSTALLATION STND

GENERAL NOTES:

- LOUVERS SIZES ARE SHOWN ON SHEET A-602
- FOR ALL METAL FINISHES CONCEALED FROM VIEW (LIKE THE BACK SIDES OF PARAPETS) AND EXPOSED TO WEATHER, PAINT COLOR TO MATCH ADJACENT WALL COLOR U.N.O.
- SEE WALL SECTIONS FOR BRICK ACCENT BAND HEIGHTS AND NO. OF COURSES

KEYED NOTES:

- INSTALLATION "DESIGN STANDARD" WAINSCOTT VENEER - 3 1/2" - 5 1/2" NOMINAL W/ ADJ. ANCHORS @16" O.C. - SEE INSTALLATION "DESIGN STANDARDS"
- 4" SMOOTHFACE STONE OR PRECAST BAND
- RUNNING BOND BRICK PATTERN - FIELD COLOR TO MATCH INSTALLATION "DESIGN STANDARDS"
- RUNNING BOND BRICK PATTERN - ACCENT COLOR TO MATCH INSTALLATION "DESIGN STANDARDS"
- STANDING SEAM METAL ROOF SYSTEM NO. 1 SEE ROOF PLAN
- STANDING SEAM METAL ROOF SYSTEM NO. 2 SEE ROOF PLAN
- KAWNEER 8400 TL ISOLOCK BLAST RESISTANT ALUMINUM FIXED WINDOW OR EQUAL WITH 1" LAMINATED INSULATED LIGHT TINT GLAZING TO MATCH INSTALLATION "DESIGN STANDARDS"
- NOT USED
- KAWNEER 1600 SERIES BLAST RESISTANT ALUMINUM CURTAIN WALL SYTEM OR EQUAL WITH 1" LAMINATED INSULATED LIGHT TINT GLAZING TO MATCH INSTALLATION "DESIGN STANDARDS"
- 14" DEEP VERTICAL VEROLEIL SUNSHADE SYSTEM BY KAWNEER OR EQUAL INTEGRAL WITH CURTAIN WALL SYSTEM
- PREFINISHED BRAKE METAL FASCIA AND COPING BY ROOFING CONTRACTOR - SEE DETAILS
- MECHANICAL LOUVERS - SEE DETAILS AND MECHANICAL DRAWINGS FOR COORDINATING SIZE AND LOCATION
- STRUCTURAL ALUMINUM TRANSLUCENT PANELS AT DORMERS
- PREFINISHED SCUPPER OR METAL GUTTER SYSTEM WITH DOWN LEADER W/ SPLASHBLOCK. MASONRY CONTROL JOINTS ARE LOCATED BEHIND DOWN LEADERS ON THE EAST AND WEST BUILDING ELEVATIONS
- CONTINUOUS BUILDING EXPANSION JOINT - SEE SPECS
- STEEL STRUCTURE - SEE STRUCTURAL DRAWINGS
- ALUMINUM SUSHADE - FINISH PER BASE STANDARDS
- INSULATED HOLLOW METAL DOOR AND FRAME
- FINISHED GRADE
- PRECAST CONCRETE OR STONE MASONRY CAP PER INSTALLATION "DESIGN STANDARDS"
- 2" INSULATED METAL PANELS AT DORMER WALLS
- CONT. SNOWGUARD - SEE DETAILS AND SPECIFICATIONS
- 9 GA. VINYL COATED CHAINLINK FENCING - COLOR PER INSTALLATION "DESIGN STANDARDS"
- CHAINLINK GATE WITH HASP AND LOCK

DATE	REV	DESCRIPTION

DESIGNED BY: M. GUMP P.E.	DATE:	REV:
DRAWN BY: M. GUMP P.E.	ISSUANCE NO.:	SYMBOL:
REVIEWED BY: D. GURLEY P.E.	W/24IN-14-X-XXXX	
SUBMITTED BY: MARK BURKHOLDER P.E.	CONTACT NO.:	
CHIEF DESIGNER/ARCHITECT	W/24IN-14-X-XXXX	
ENGINEER & ARCHITECT	W/24IN-14-X-XXXX	
ENGINEERING & CONSTRUCTION DIVISION	FILE NAME:	
	PW143A_A-202.DGN	
	POST DATE: 28 SEPTEMBER 2013	
	PLT SCALE: AS SHOWN	

BASIC TRAINING (BT) BATTALION HEADQUARTERS (BNHQ) REGION 3A ADAPT-BUILD DESIGN ENERGY MODEL

EASTWEST ELEVATIONS

SHEET REFERENCE NUMBER
A-202

